



Ravenna

Immediate Possession

\$789,900

3 Bed | 2.5 Bath

2,612 Sq.Ft.

Over \$12,000 of Included Upgrades

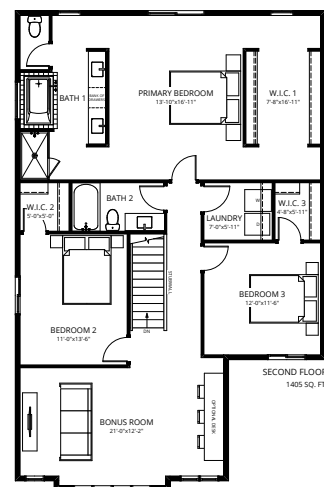
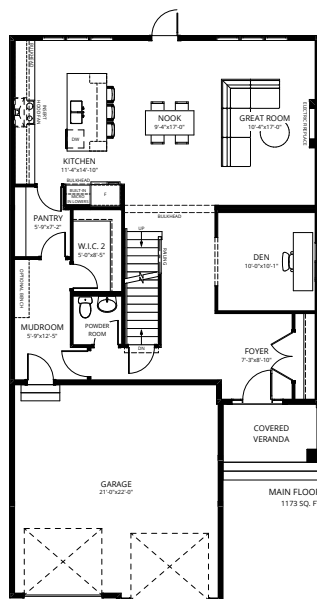
Located in the diverse, family-oriented neighbourhood of Southwest Edmonton, Ambleside is surrounded by parks, ponds, and trails all within walking distance to schools and amenities. This limited collection of Single Family Homes is just a short drive to essential services in the Currents at Windermere, Riverbend, and Terwillegar.

Feature Highlights

- Upgraded kitchen layout including chimney hood fan, built-in microwave, and backsplash tile.
- Quartz countertops throughout the home.
- 42" electric fireplace with feature paint in the great room.
- Upgraded primary ensuite shower enclosure and drop-in soaker tub.
- Second floor laundry room with 12"x24" tile flooring.
- Wide vinyl plank flooring throughout the main floor.
- Contemporary Kohler matte black plumbing fixtures throughout.
- Upgraded matte black door hardware.
- Upgraded white euro shelving with oval black rods.

Contact

Feisal Rahall
Area Sales Manager
frahall@averton.ca
780.267.7877



1512 Ainslie Place SW, Edmonton, AB

