

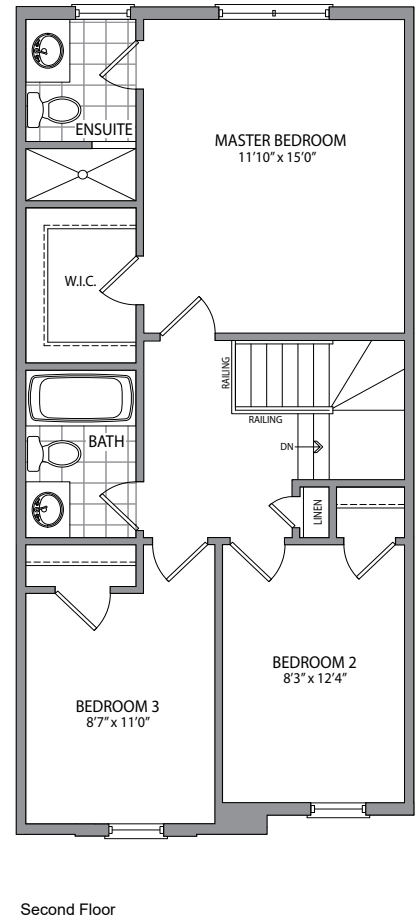
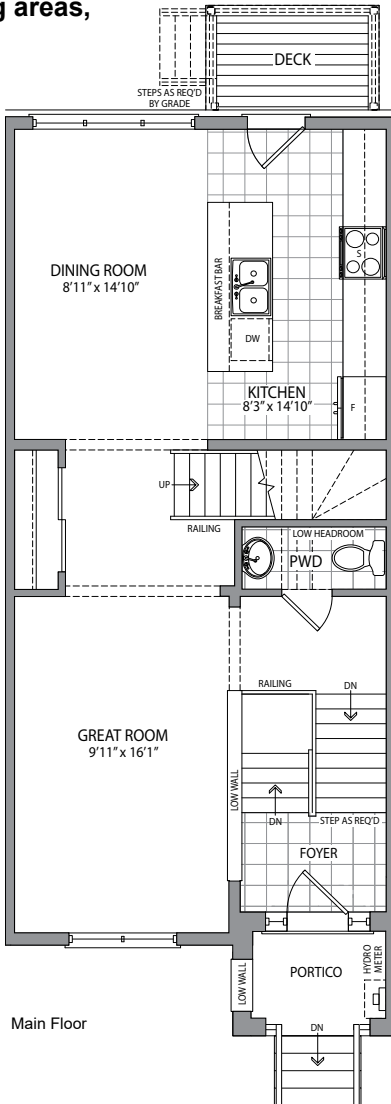
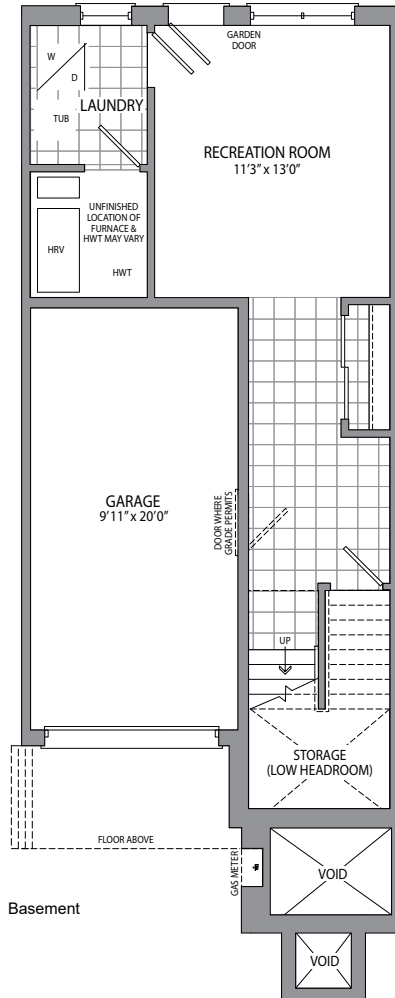


29 Lyall Stokes Cir.

**1,750 sq.ft. | 3 Bed | 2.5 Bath
Walk-Out Basement**

- Upgraded kitchen with quartz countertops, designer cabinetry, backsplash tile and hardware.
- Upgraded vinyl flooring in main floor living areas, bedrooms, and hallways.
- HERS H20 Rating Certified Home.

**Over \$35,000 of
Included Upgrades**



All drawings are artist's concept and may vary slightly from the final product. Actual usable floor space may vary from stated area and square footage has been calculated based on usable living space according to Tarrion rules. Drawings may show optional features which may not be included in the base price. The number of interior and exterior steps may vary from what's shown based on individual lot plot grading conditions. Plan is reversed for some units. End conditions and/or interior conditions may be applicable. Models may be available in other elevations not shown. Refer to overall floor plan and ask a sales representative for further details. E. & O. E. TH-3.