



Pescara

Immediate Possession

\$723,714 plus GST

3 Bed | 2.5 Bath

2,386 Sq.Ft.

Over \$13,000 of Included Upgrades

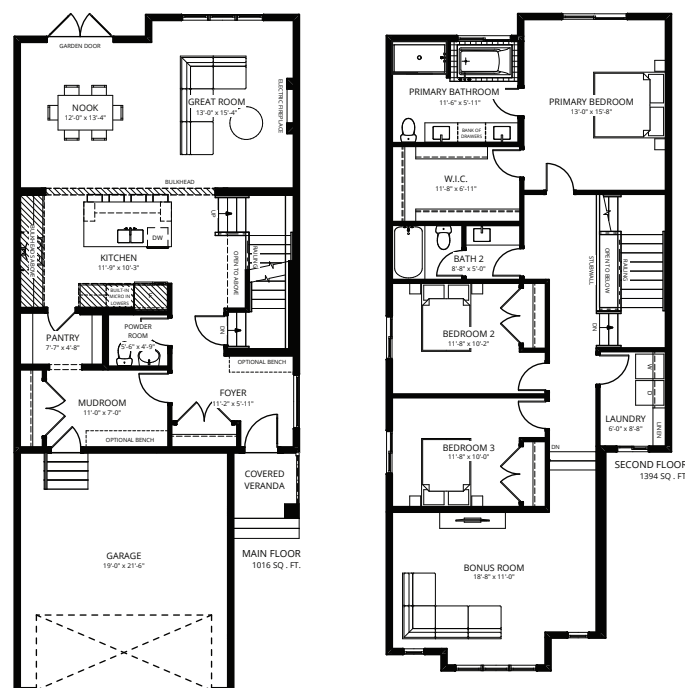
Located in the diverse, family-oriented neighbourhood of Southwest Edmonton, Ambleside is surrounded by parks, ponds, and trails all within walking distance to schools and amenities. This limited collection of Single Family Homes is just a short drive to essential services in the Currents at Windermere, Riverbend, and Terwillegar.

Feature Highlights

- Custom kitchen layout including cabinet hood fan, built-in microwave, full-height backsplash tile, island eating bar and a Kohler brass faucet.
- Quartz countertops throughout the home.
- 42" electric fireplace with feature paint in the great room.
- Upgraded primary ensuite with drop-in soaker tub, black barn-style shower door with horizontal mullions, and modern brass plumbing fixtures.
- Second floor laundry room with 12"x24" tile flooring.
- Wide vinyl plank flooring throughout the main floor.
- Contemporary Kohler matte black plumbing fixtures in Bath 2 and powder room.
- Upgraded matte black door hardware.
- Upgraded light fixtures throughout the home's interior.

Contact

Feisal Rahall
Area Sales Manager
frahall@averton.ca
780.267.7877



1362 Ainslie Wynd SW, Edmonton, AB

