



# Arezzo

# Immediate Possession

**\$869,900**

4 Bed | 2.5 Bath

3,111 Sq.Ft.

**Over \$14,000 of Included Upgrades**

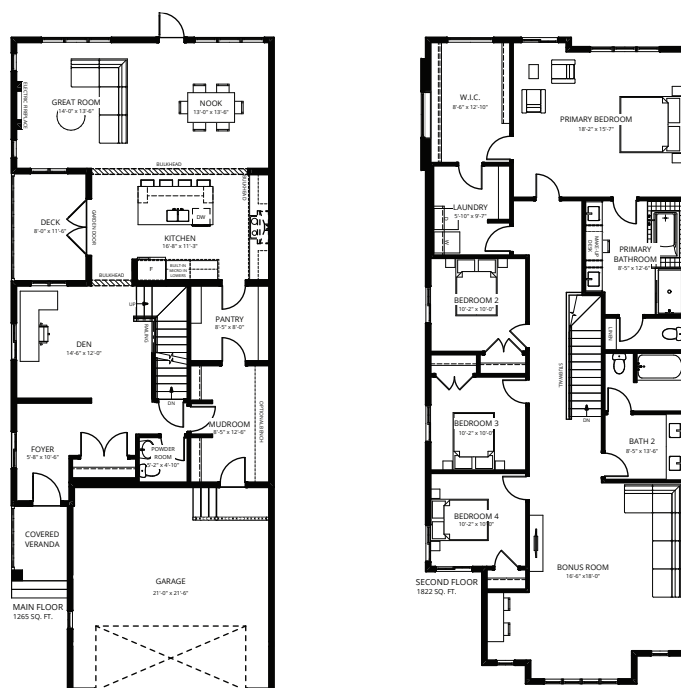
Located in the diverse, family-oriented neighbourhood of Southwest Edmonton, Ambleside is surrounded by parks, ponds, and trails all within walking distance to schools and amenities. This limited collection of Single Family Homes is just a short drive to essential services in the Currents at Windermere, Riverbend, and Terwillegar.

## Feature Highlights

- Custom kitchen layout including cabinet hood fan, built-in microwave, full-height backsplash tile, island eating bar, and a Kohler matte black faucet.
- Quartz countertops throughout the home.
- 42" electric fireplace with feature paint in the great room.
- Upgraded primary ensuite with drop-in soaker tub and extended wall surround, black barn-style shower door, custom-built vanity, and quartz backsplash.
- Main floor den.
- Wide vinyl plank flooring throughout the main floor.
- Contemporary Kohler matte black plumbing fixtures throughout.
- Upgraded matte black door hardware.
- Upgrade light fixtures throughout the interior and exterior of the home.

## Contact

Feisal Rahall  
Area Sales Manager  
frahall@averton.ca  
780.267.7877



**1365 Ainslie Wynd SW, Edmonton, AB**

