



Tilden - Park Collection

\$439,900

2 Bed | 2.5 Bath

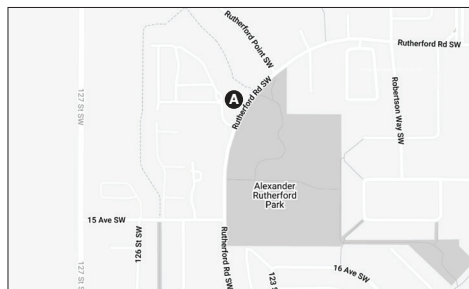
1,469 Sq.Ft.

Over \$1,000 of Included Upgrades

Designed for family living, Pivot - located in established, tree-lined Rutherford features spacious, bright floor plans with unexpected high-end finishes. Backing rich mature trees, each home is pivoted 65-degrees for ultimate privacy. Pivot is designed with impeccably landscaped yards, private garages, and innovative interior design surrounded by walking trails and lush green parks for the whole family to enjoy.

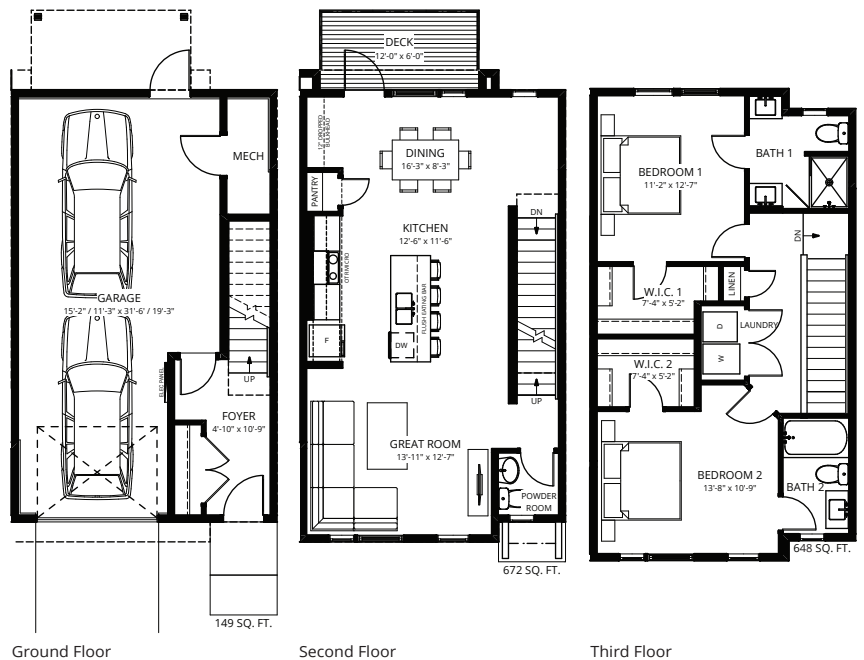
Location

82-1304 Rutherford Road SW, Edmonton, AB



Contact

Kristen Bryant - Area Sales Associate
 kbryant@averton.ca or 587.338.5611



Feature Highlights

- Private slate patio within a quiet backyard offering maintenance-free landscaping.
- Floor-to-ceiling windows and 9' main floor ceilings maximize natural light.
- Laminate flooring adds warmth and durability to open concept main floor kitchen.
- Award-winning architecture complimented with black exterior windows.
- Form meets function in the kitchen with a modern single-lever Kohler faucet and undermounted roomy single-bowl sink.
- Details of minimal trim, polished chrome levers, and a single shaker profiled door.
- Elevate your lifestyle with open riser carpeted stairs.
- LED surface mounts throughout the main floor with a linear black LED pendant over the island.

Images featured are not representative of actual units, variations may be present. Actual usable floor space may vary from the stated floor area. Prices and specifications are subject to change at any time. E.&O.E. 09/26/2023.