



Lanzano - Urban Classic

\$779,900

3 Bed | 2.5 Bath
2,505 Sq.Ft.

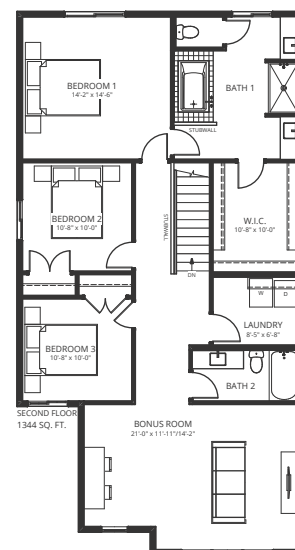
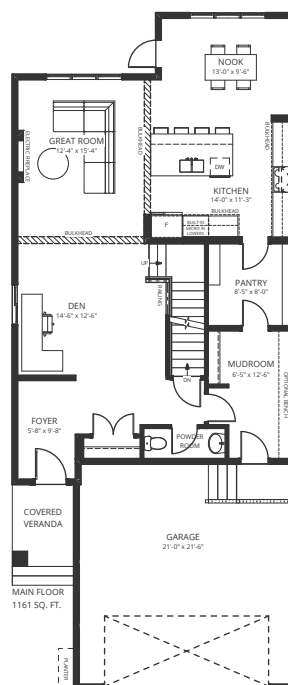
Located in the diverse, family-oriented neighbourhood of Southwest Edmonton, Ambleside is surrounded by parks, ponds, and trails all within walking distance to schools and amenities. This limited collection of Single Family Homes is just a short drive to essential services in the Currents at Windermere, Riverbend, and Terwillegar.

Feature Highlights

- 9' main floor ceilings with 8' high doors and polished chrome levers.
- White euro shelving and oval chrome rods.
- 7 piece appliance package that includes a chimney hood fan and built-in microwave.
- Quartz countertops throughout the home with an oversized Blanco Silgranit kitchen sink.
- Fully tiled shower walls with a fiberglass base and barn shower door.
- Wide vinyl plank in chevron install floors throughout the main floor and 12x24 tile selections in the upper floor bathrooms and laundry.
- Contemporary Kohler polished chrome plumbing fixtures.
- Surface mount LED light fixtures for a seamless look throughout

Contact

Kristen Bryant - Area Sales Representative
kbryant@averton.ca or 587.338.5611



Location

1403 Ainslie Wynd SW, Edmonton, AB

