



Lanzano

\$779,900

3 Bed | 2.5 Bath

2,499 Sq.Ft.

Over \$15,000 of Included Upgrades

Located in the diverse, family-oriented neighbourhood of Southwest Edmonton, Ambleside is surrounded by parks, ponds, and trails all within walking distance to schools and amenities. This limited collection of Single Family Homes is just a short drive to essential services in the Currents at Windermere, Riverbend, and Terwillegar.

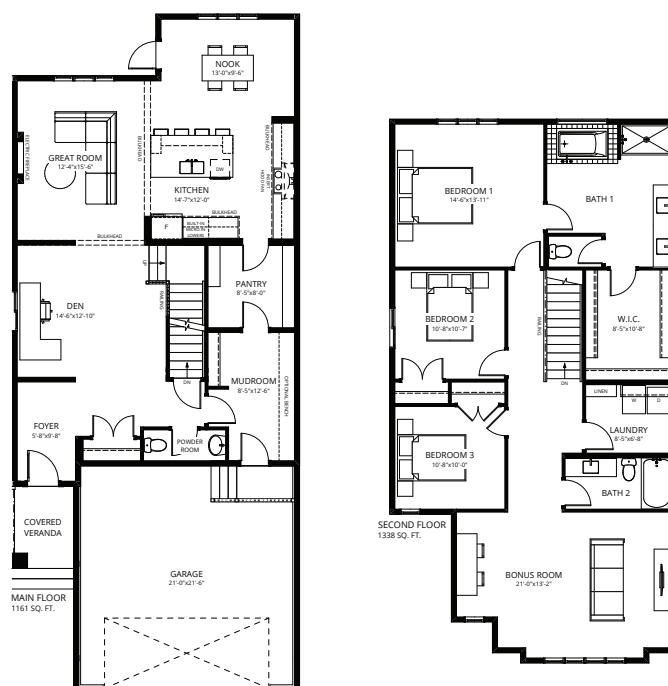
Feature Highlights

- Custom kitchen layout including cabinet hood fan, built-in microwave, full-height backsplash tile, and a Kohler brass faucet.
- Quartz countertops throughout the home.
- 42" electric fireplace with feature paint in the great room.
- Upgraded primary ensuite herringbone tiled shower enclosure with black barn-style door and quartz backsplash.
- Second floor laundry room with 12"x24" tile flooring.
- Wide vinyl plank flooring throughout the main floor.
- Contemporary Kohler matte black plumbing fixtures throughout.
- Upgraded matte black door hardware.
- Upgraded white euro shelving with oval black rods.
- Upgraded light fixtures throughout the home.

Contact

Kristen Bryant - Area Sales Representative

kbryant@averton.ca or 587.338.5611



Location

1399 Ainslie Wynd SW, Edmonton, AB

