



modern metal & hardie exteriors



designer colour palette

trailside c

immediate possession

2, 5 rondeau drive, st. albert
 interior 1,327 sqft | exterior 120 sqft
 2 bed | 2.5 bath

\$408,540 incl. gst
 condo fees est. \$199 + MNA

contact

Kristen Bryant Area Sales Associate kbryant@averton.ca 587.338.5611	Feisal Rahall Area Sales Manager frahall@averton.ca 780.267.7877
--	---

showhome + presentation centre
 51 - 5 rondeau drive, st. albert

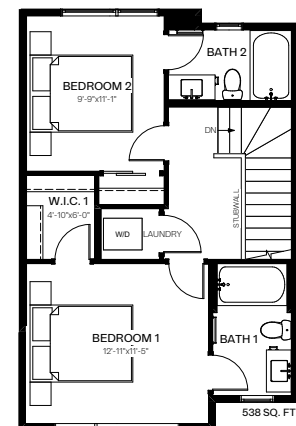
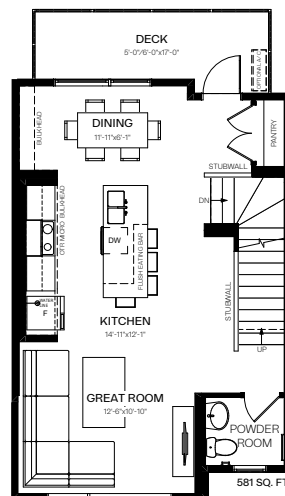
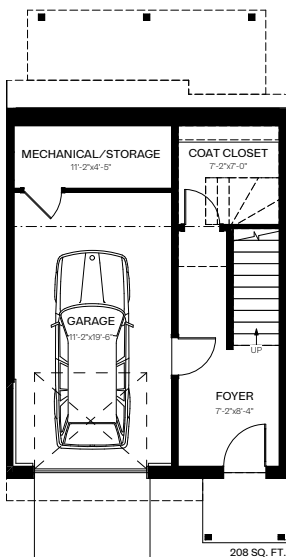
feature highlights

- bold grey and rich wood tones throughout
- 9' main floor ceilings
- custom designed kitchen layout featuring island with breakfast bar and stainless steel appliances
- quartz countertops throughout kitchen and bathrooms
- large foyer with walk-in closet
- rough-in A/C unit
- oversized windows
- large rear deck backing onto green space
- James Hardie™ siding
- LED surface mount fixtures
- solar panel ready

community amenities

- fetching greens (dog park)
- red willow express line (trails)
- growers grove (community garden)
- midtown commons (town square)
- rondeau park (community park)
- the retreat (park within condominium)
- midtown neighbourhood association

certified BUILT GREEN®
 community and home



Images and renderings featured are representative of home layout and/or design only. Exact finishes may differ. Actual layout may be reversed. Prices and specifications are subject to change at any time, cannot be combined with any other offer, and are not valid outside of Alberta. E.&O.E. 02/27/2024.

