



Presidio - Forest Collection

\$649,900

3 Bed | 2.5 Bath

1,787 Sq.Ft.

Over \$18,000 of Included Upgrades

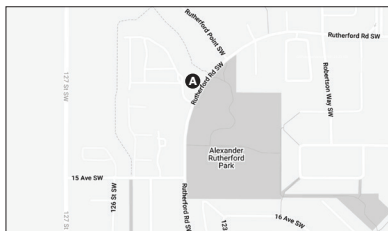
Designed for family living, Pivot - located in established, tree-lined Rutherford features spacious, bright floor plans with unexpected high-end finishes. Backing rich mature trees, each home is pivoted 65-degrees for ultimate privacy. Pivot is designed with impeccably landscaped yards, private garages, and innovative interior design surrounded by walking trails and lush green parks for the whole family.

Feature Highlights

- Contemporary, award-winning architecture.
- Form meets function in the kitchen with a modern single-lever Kohler faucet and undermounted roomy single-bowl sink.
- Elevate your lifestyle with open riser carpeted stairs.
- Thoughtful details of trim, upgraded matte black levers, and a single shaker profiled door.
- Surface mount LED light fixtures for a seamless look throughout the home.

Location

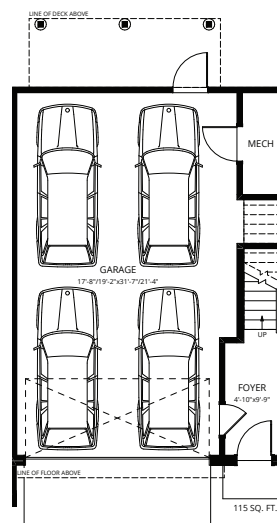
41-1304 Rutherford Road SW, Edmonton, AB



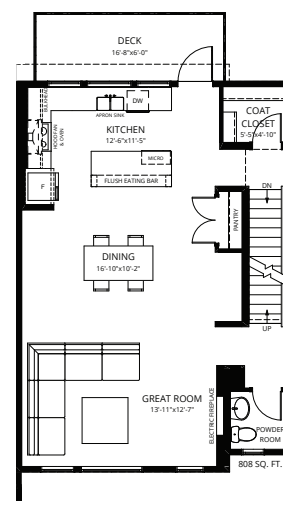
Contact

Kristen Bryant
Area Sales Associate

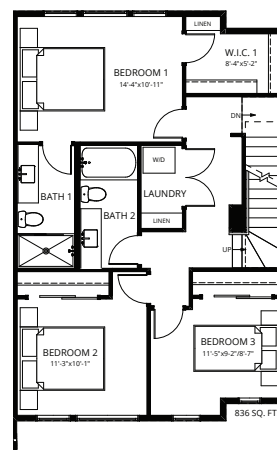
kbryant@averton.ca
or 587.338.5611



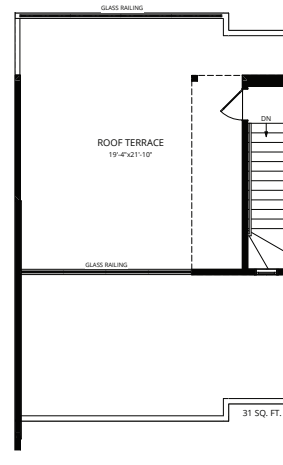
Ground Floor



Second Floor



Third Floor



Roof Terrace