



Presidio - Forest Collection

\$649,900

3 Bed | 2.5 Bath

1,787 Sq.Ft.

Over \$16,000 of Included Upgrades

Designed for family living, Pivot - located in established, tree-lined Rutherford features spacious, bright floor plans with unexpected high-end finishes. Backing rich mature trees, each home is pivoted 65-degrees for ultimate privacy. Pivot is designed with impeccably landscaped yards, private garages, and innovative interior design surrounded by walking trails and lush green parks for the whole family.

Feature Highlights

- Contemporary, award-winning architecture with black exterior windows.
- 9' Main floor ceilings with 8' high doors and upgraded matte black levers.
- 7 Piece appliance package that includes a chimney hood fan and built-in microwave.
- 8 1/2" wide vinyl plank floors throughout the main floor and 12"x24" tile selections in the upper floor bathrooms and laundry room.
- Rooftop terrace, perfect for entertaining.

Location

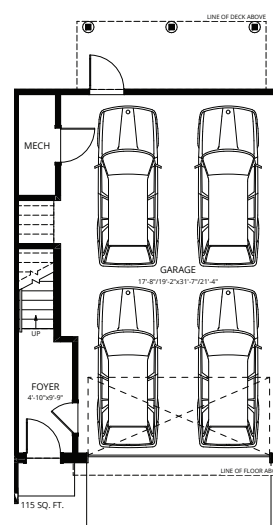
42-1304 Rutherford Road SW, Edmonton, AB



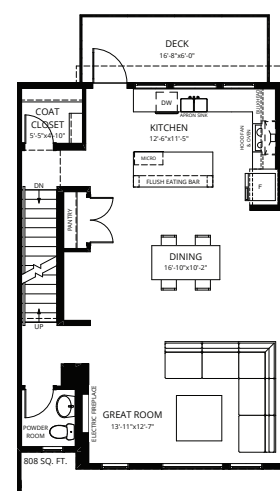
Contact

Kristen Bryant
Area Sales Associate

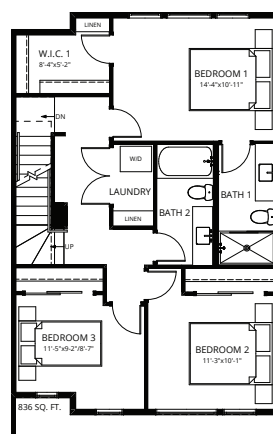
kbryant@averton.ca
or 587.338.5611



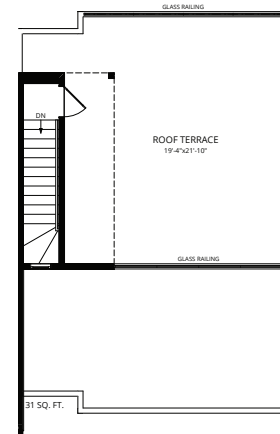
Ground F



Second Floor



Third Floor



Roof Terrace