



Arezzo

Immediate Possession

\$849,900

4 Bed | 2.5 Bath

3,111 Sq.Ft.

Over \$14,000 of Included Upgrades

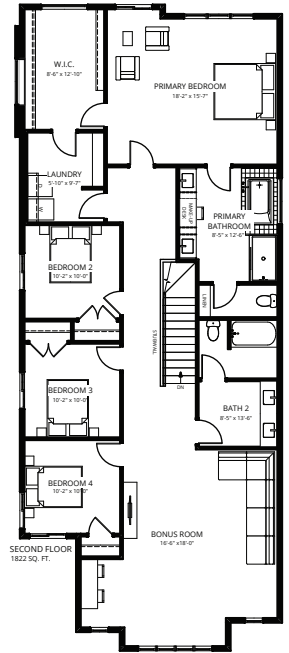
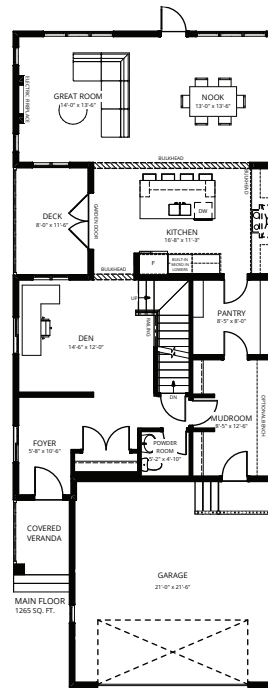
Located in the diverse, family-oriented neighbourhood of Southwest Edmonton, Ambleside is surrounded by parks, ponds, and trails all within walking distance to schools and amenities. This limited collection of Single Family Homes is just a short drive to essential services in the Currents at Windermere, Riverbend, and Terwilligar.

Feature Highlights

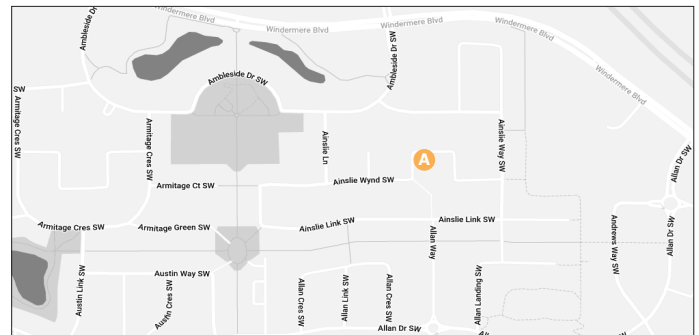
- Custom kitchen layout including cabinet hood fan, built-in microwave, full-height backsplash tile, island eating bar, and a Kohler matte black faucet.
- Quartz countertops throughout the home.
- 42" electric fireplace with feature paint in the great room.
- Upgraded primary ensuite with drop-in soaker tub and extended wall surround, black barn-style shower door, custom-built vanity, and quartz backsplash.
- Main floor den.
- Wide vinyl plank flooring throughout the main floor.
- Contemporary Kohler matte black plumbing fixtures throughout.
- Upgraded matte black door hardware.
- Upgrade light fixtures throughout the interior and exterior of the home.

Contact

Feisal Rahall
 Area Sales Manager
 frahall@averton.ca
 780.267.7877



1365 Ainslie Wynd SW, Edmonton, AB



Images and renderings featured are representative of home layout only. Finishes may differ. Actual usable floor space may vary from the stated floor area. Prices and specifications are subject to change at any time. E.&O.E. 04/25/2025.