



upgraded kitchen cabinetry and layout



main-floor primary bedroom



extended rooftop terrace

boulevard a

immediate possession

42, 5 rondeau drive, st. albert

2,175 sqft + 1,054 sqft finished basement
total interior 3,229 sqft | exterior 502 sqft
3 bed | 3.5 bath

\$1,059,000 incl. gst

*furniture not included
condo fees est. \$320 + MNA

over \$300,000 of included upgrades

contact

Feisal Rahall
Area Sales Manager
frahall@averton.ca
780.267.7877

showhome + presentation centre

51 - 5 rondeau drive, st. albert

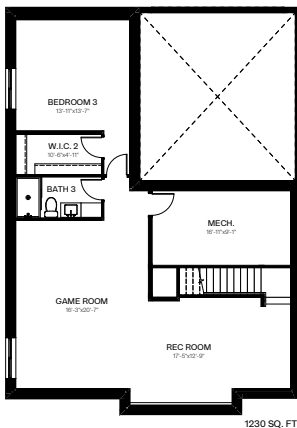
feature highlights

- upgraded kitchen cabinetry and layout
- upgraded kitchen appliances
- fully finished custom basement
- upgraded herringbone hardwood throughout
- upgraded ensuite with fully tiled shower and freestanding soaker tub
- upgraded matte black geometric railing with stringers
- extended rooftop terrace with aluminum railing and glass panels
- main-floor primary bedroom with a custom built-in king bed and nightstands
- custom mudroom cabinetry and layout

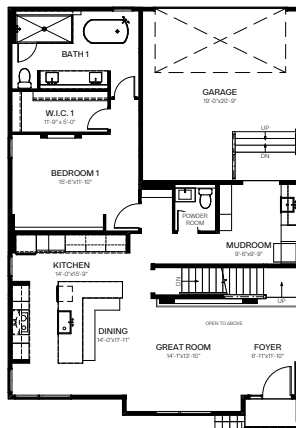
community amenities

- fetching greens (*dog park*)
- red willow express line (*trails*)
- growers grove (*community garden*)
- midtown commons (*town square*)
- rondeau park (*community park*)
- the retreat (*phase within condominium*)
- midtown neighbourhood association

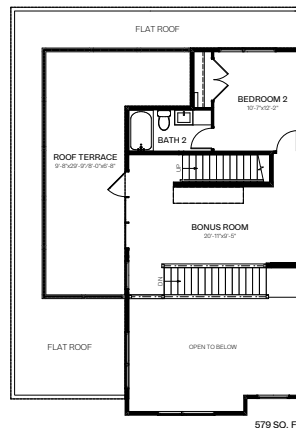
**certified BUILT GREEN®
community and home**



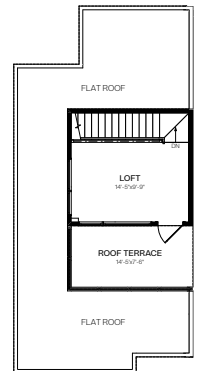
1230 SQ. FT.



1343 SQ. FT.



579 SQ. FT.



171 SQ. FT.